



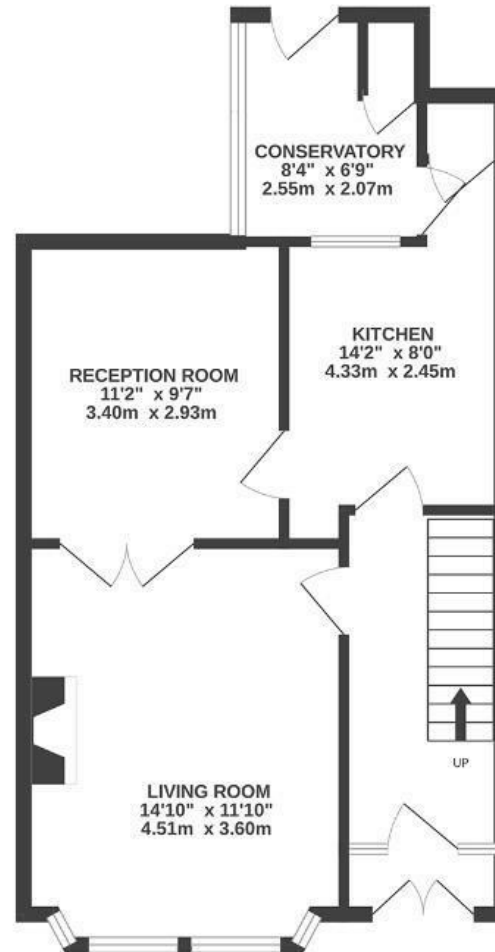
Crowther Road

HORFIELD

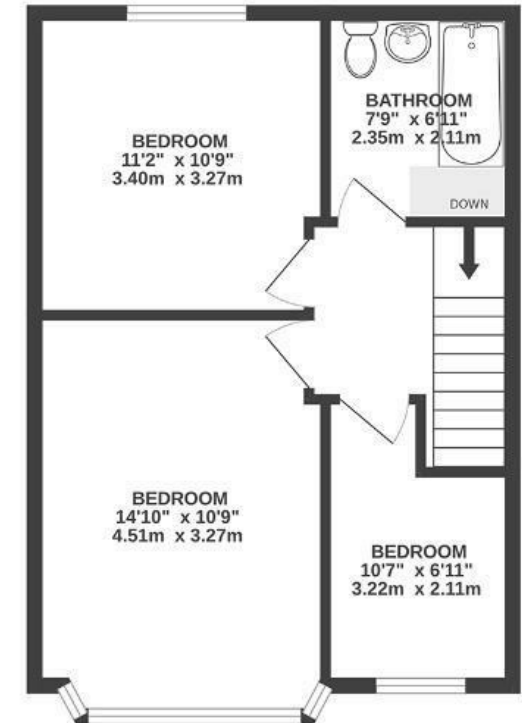
APPROXIMATE FLOOR AREA
90 SQM / 963 SQFT



GROUND FLOOR



FIRST FLOOR



Boardwalk

Crowther Road

HORFIELD, BRISTOL



£350,000



3 Bedrooms



BS7 9NS



1 Bathrooms

"We enjoy the views across Bristol and watching the airplanes going into Bristol Airport. When our children were younger the hot air balloons would land on the nearby fields which was very exciting."

